

# **MRC Global**

## **Products & Services**

Belgium



*Experts You Can Trust*



# MRC Global<sup>®</sup>

## Our expertise at your service

MRC Global Belgium is the leading distributor of valves in Belgium.

Our dedicated team will provide you with the best solutions for different applications and markets such as refinery & petrochemical, transport & storage, chemical, power, process & waste water, pharmaceutical, food & beverage, cryogenic & low temperature and general industrial applications.

MRC Global is well positioned to serve your energy transition project needs. We follow closely the developments and requirements linked to hydrogen, carbon capture, utilization and storage [CCUS], renewables and more. Many of our manufacturers have developed a specific product range for these applications.

Choosing the right valve or automation package that also meets the right specifications is critical. Our experienced team designs and engineers your safety, actuation and control packages to meet all customer and industry requirements.

Whether your application calls for manual or automated valves and control systems, MRC Global Belgium is your one-stop for all of your valves and engineered product needs.

*Experts You Can Trust*



# Gate Valves

Gate manual or automated linear movement valves for tight shut off.  
Suitable for standard, severe, high pressure or cryogenic applications.

## POSSIBLE EXECUTIONS:

- Solid, Split, Flexible and Parallel Disc
- Metal to Metal or Soft Seated
- Full and Reduced Port
- End Connections: All Types
- Rising or Non-Rising Stem
- Outside Stem and Yoke (OS&Y)
- Bolted/Welded/Pressure Sealed Bonnet
- Low & High Pressure
- Cryogenic Application



## Globe Valves

Globe manual or automated linear movement valves for tight shut off or control operation. Suitable for standard, severe, high pressure or cryogenic applications.

### POSSIBLE EXECUTIONS:

- Shutoff and Throttle Disc
- Metal to Metal or Soft Seated
- Full and Reduced Port
- End Connections: All Types
- Rising or Non-Rising Stem
- Outside Stem and Yoke (OS&Y)
- Bolted/Welded/Pressure Sealed Bonnet
- Low & High Pressure
- Cryogenic Application
- T, Y and Angle Type



## Check Valves

Non return valves to prevent back flow in standard, severe, high pressure or cryogenic applications.

### POSSIBLE EXECUTIONS:

- End Connections: All Types
- Bolted & Pressure Sealed Bonnet
- Low & High Pressure



# Ball Valves

Ball valves floating or trunnion style, soft or metal seated are widely used in all industries from HVAC to oil & gas, chemical and pharmaceuticals. Known for their little to no pressure drop in all sizes due to their quarter turn operation, they are ideal to actuate for on/off applications.

## POSSIBLE EXECUTIONS:

- Floating Ball
- Trunnion Mounted
- Full or Reduced Bore
- Metal Seated
- Cavity Free
- Clean Service
- Fully Welded
- Multi Way
- Cryogenic



# Butterfly Valves

Butterfly valves are available as, concentric, double eccentric or triple offset (TOV), soft or metal seated, vulcanized or lamellar. The lower weight of butterfly valves makes them ideal for larger applications and actuation. They are available in a variety of materials and seals and widely used throughout the industry.

## POSSIBLE EXECUTIONS:

- Concentric
- Eccentric – Double/Triple Execution
- Vulcanised Liner/Loose Liner
- Double Flanged (Short/Long), Wafer, Lug, U-Lug Style
- All Sorts of Rubber Linings
- PTFE Lined



# Plug Valves

For customers requiring cavity free valve design, ease of maintenance and in-line availability, plug valves provide reliable performance in a wide range of applications. Their cavity free/ large shut-off area increases in-line sealing with no seizing or sticking.

## POSSIBLE EXECUTIONS:

- Multi Way
- Jacketed
- Fire Safe
- Control with Caged Plug



## Steam

### CORE DRIVERS:

- Increase Safety and Productivity
- Save on Fuel Costs
- Reduce Emission and Greenhouse Gases
- Save on Capital and Operational Costs

### STEAM TRAPS:

Steam traps are used to discharge condensate without loss of steam, with automatic air venting. There are different types for many different applications.



- Thermostatic Steam Traps with Bimetallic Regulator
- Thermostatic Steam Traps with Membrane Regulator
- Ball-float Steam Traps
- Thermodynamic Steam Traps
- Steam Traps for Universal (Swivel) Connectors, e.g. Inverted Bucket

### INTERMITTENT AND CONTINUOUS BLOWDOWN VALVES

As the boiler water evaporates, the total dissolved particles remain in the water. To keep the total dissolved solids (TDS) level within limits, a certain amount of boiler water (boiler blowdown) needs to be discharged continuously or periodically. The continuous blowdown valves manual and with electric actuator fulfill this purpose.



## Steam

### INDUSTRIAL ELECTRONICS:

Industrial electronics are highly engineered safety products which are part of the safety equipment of your steam generator:



- Electrodes, Transmitters, Switches, Controllers
- For Level Control, Conductivity, Temperature, Pressure
- Functional Safety IEC 61508 SIL 2 or SIL 3

### STEAM TRAP TESTING

With the growing focus of customers on a proper steam and condensate cycle as a base to reduce CO2 emissions and footprint, a new steam trap testing device has been released. Already in the base version is remote support and a Master Data management included. Another package for an online Trap test portal will provide new “Cloud based Services”.



### VESSELS AND CUSTOM DESIGNED SOLUTIONS

We engineer and manufacture custom-made solutions based on the customers' needs and preferences:

- High-Pressure Deaerators
- Condensate Tanks
- Energy Recovery Systems
- Condensate Pumps
- Blowdown Mixing Coolers
- Condensate Campening Pots





# Safety

## PRESSURE SAFETY VALVES

We represent the largest manufacturer in Europe of safety valves, a leader in its market worldwide. Sizing and selection of the safety valves is done by our own in-house expertise.

### Wide product range:

- High Performance
- API
- Pilot Operated
- Compact Performance
- Clean Service
- Critical Service
- Modulate Action
- Change Over Valves
- Pneumatic Supplementary Loading System
- All Products Exclusively Made in Germany
- Large Local Stocks for Short Delivery Times



### Worldwide Approvals:

- ISO 4126-1/-4
- AD 2000-Merkblatt A2
- ASME Sec. VIII Div. 1
- CRN
- AQSIG

## NANOTIGHTNESS

- Exceeds the Requirements for Functional Tightness of API 527 by 50%
- Available as Standard for all Metal-Seated Safety Valves

# Safety

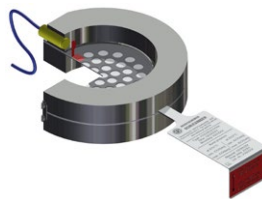
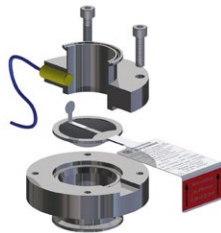
## NOISE PROTECTION - SILENCERS

To reduce noise emissions coming from safety valves or start-up valves, we have delivered worldwide blow-off silencers with a great range in sizes and applications:



## RUPTURE DISCS

Rupture discs protect against overpressure and vacuum. The great variety of bursting discs cover various fields of applications, including chemical/pharmaceutical industries, crude oil/natural gas and power generation.



# Explosion & Tank Protection

Combination of breather valves, emergency relief valves, blanketing valves and flame arresters as a single, integrated solution.

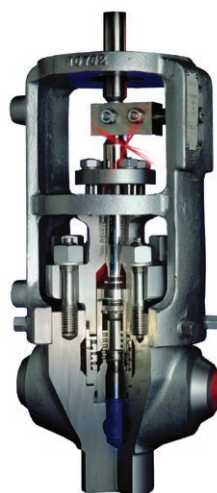
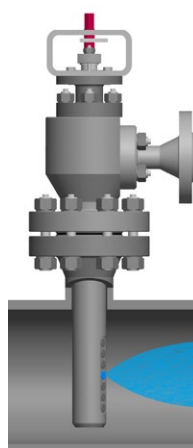
- End-of-line and in-line breather valves for pressure or vacuum relief for set pressures from 2 mbarg.
- Emergency relief valves for protection of storage tanks in case of fire.
- In-line flame arresters for protection against deflagration and detonation.
- End-of-line flame arresters for protection against atmospheric deflagration, endurance burning proof as an option.
- Tank accessories such as: floating suction units, skimmers, gauging & sampling equipment and in-tank valves.
- In-house know-how, calculation (API2000, EN14015) and selection.



## Control

Combination of control valves, safety valves and silencers as one solution.

- 2-way control valves for pressure control, flow control, blow-out, for all kind of media, all sizes and all pressure ranges.
- 3-way control valves for mixing or diverting applications for all kind of media, all sizes and all pressure ranges.
- Specialty control valves such as feedwater control valves with spill-back, blow-down valves, steam conditioning valves, desuperheaters, start-up valves.
- Self-acting regulators for all kind of pressure control form 0,002 barg up to for gases, liquids, steam and clean applications.
- Float-controlled valves for level control, bleeding and venting.
- In-house know-how, calculation and selection.



## Automation

Choosing the right valve and automation package that also meets the right specifications is critical. MRC Belgium's experienced automation team designs automation and control packages to meet customer and industry requirements. Our warehouse and workshop located in Antwerp allows for fast assembly and delivery of complete automated units. MRC Global has the right team to support your valve automation needs. Put our expertise to work for you.

### PNEUMATIC ACTUATORS

- Rack and Pinion
- Scotch Yoke
- Linear



### ELECTRIC ACTUATORS

- On-Off
- Modulating/Control
- ATEX Certified
- Fail-Safe
- Fire-Proof

### HYDRAULIC AND ELECTRO-HYDRAULIC ACTUATORS

### MANUAL ACTUATORS

- Gearboxes
- Spring Return Handles
- Manual Overrides
- Chain Wheels



### CONTROLS & ACCESSORIES

- Solenoids
- Limit Switches
- Air Filter Regulators
- Speed Controllers
- Positioners
- Mounting Kits
- Control Panels

**Complete Automated Valve Solutions**



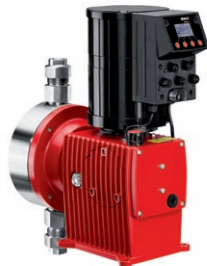
# Pumps & Couplings

Handling liquids, we provide you the best solution from our wide range of pumps. Whether you want to transfer large quantities or dose small quantities, thin-bodied or viscous liquids, harmless or corrosive substances, send us your application details and we will help you. Our extensive range consists of following types of pumps:

- Drum Pumps
- Eccentric Screw Pumps Limit Switches
- Double Diaphragm Pumps
- Centrifugal Pumps
- Dosing Pumps
- Flowmeters
- Accessories



From compressed air to gas, breathing air, fluids and hydraulic oil there is a Quick Connect Coupling for your type of medium. Regardless of market segment, you can find our couplings in such diverse fields as agriculture, automotive, construction, off-shore, medical, marine, transportation, wind power and information technology, just to mention a few industries.



# Lined & Sampling

Lined products are developed for the most severe corrosive or abrasive applications. We offer a complete product range: lined ball valves, butterfly valves, plug valves, sight glasses, check valves, diaphragm valves and strainers. Sampling: inline and reactor sampling systems for safe handling of critical liquid and gaseous process media.



# Clean Service

In high purity applications, high standards are set for the production processes and utility systems. Therefore, you expect the same quality from your valves and valve supplier. The complete range we offer is in full accordance with the specific demands for materials, connections, surface finishing, drainability and cleanability. We also provide special treatment of all these products towards handling, storage, packing and transport with a full traceability between product and certificates.

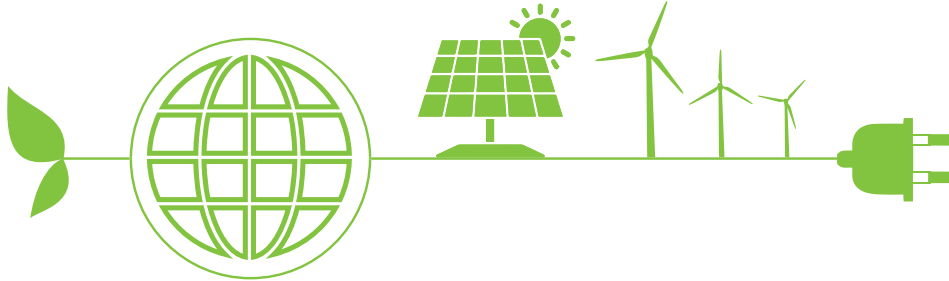


# Special Applications

- Oxygen Use
- HF Acid
- Double Block and Bleed
- Reactor Bottom Valves
- Pipeline



# Green Energy



A global energy transition is underway to address climate change. We believe that our company has an important role to play in the energy transition, and we are already participating in many green energy projects and decarbonization efforts. We supplied products to alternative energy projects, including those in the following alternative energy categories:

- Biofuels
- Wind
- Hydrogen
- Geothermal
- Hydro (water)
- Carbon Capture, Utilization & Storage

For each application MRC Global offers high quality valve manufacturers. A few examples of our scope of supply:

- Corrosion Resistant Valves for Geothermal Processes
- Low Emission Valves for High Tightness Demanding Hydrogen Service
- High Temperature Resistant Valves for Solar Plants
- Automated Ball Valves for Carbon Capture, Utilization & Storage Applications
- Safety Equipment Such as Safety Relief Valves and Flame Arrestors
- Duplex Valves for Offshore Windfarms
- Valves for Biofuels



# MRC Global

## HEADQUARTERS

### MRC Global

Fulbright Tower  
1301 McKinney Street, Suite 2300  
Houston, TX, US 77010 - 1011  
Téléphone: (877) 294-7574

## OPERATIONS AND AUTOMATION CENTER:

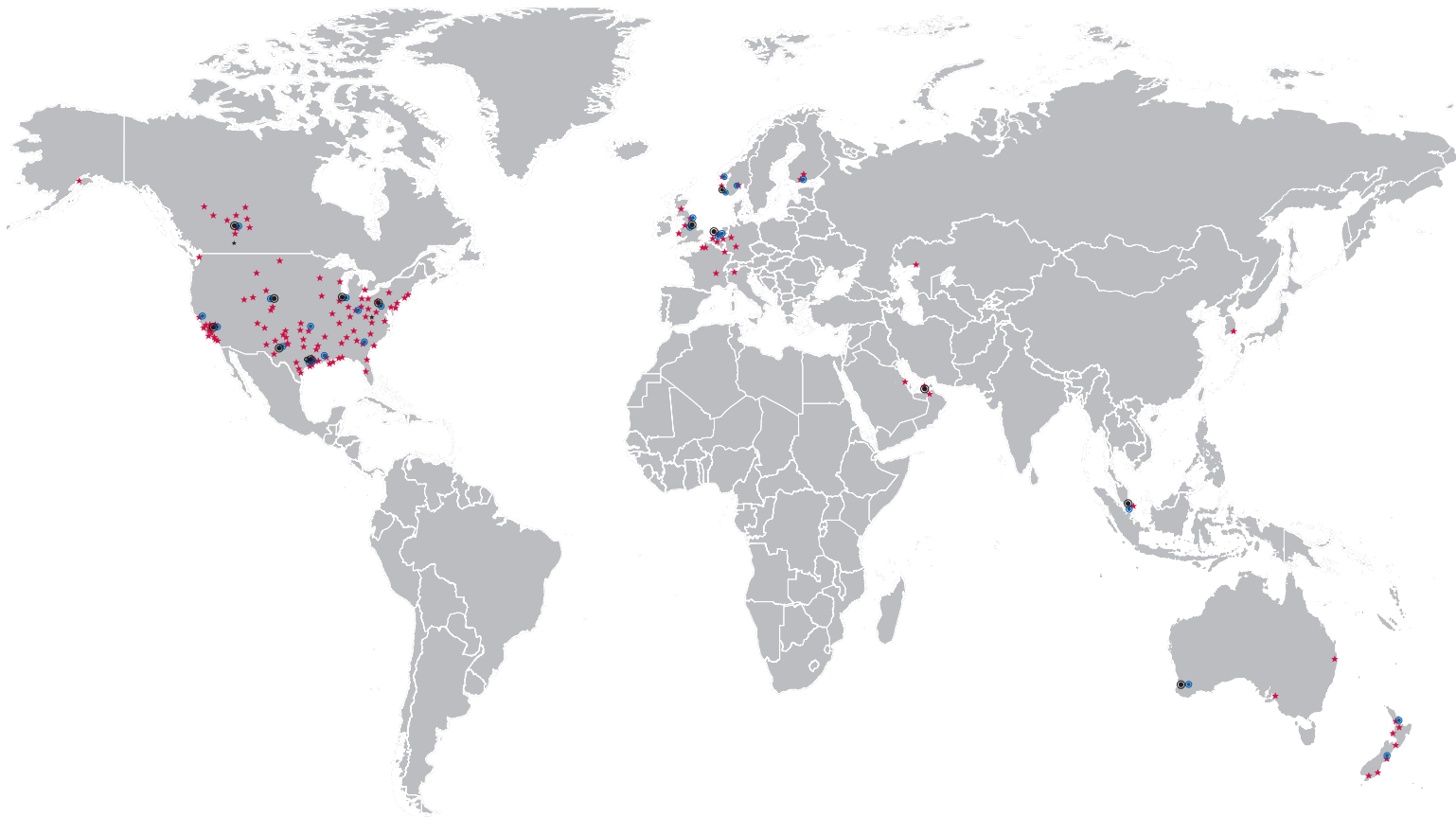
### MRC Global (Belgium) NV

Vaartkaai 50  
B-2170 Antwerpen (Merksem)  
Tel.: +32 (0)3 205 13 20  
E-mail: belgium@mrcglobal.com

## SALES OFFICE

### MRC Global (Belgium) NV/SA

Basilieklaan/Av. de la Basilique 106  
B-1082 Brussel/Bruxelles  
Tel./Tél.: +32 (0)2 482 01 50  
E-mail: salesbru@mrcglobal.com



### MRC Global locations

- 🏢 Headquarters
- ★ Corporate Offices
- 🌐 Regional Distribution Centers
- ⚙️ Valve & Engineering Centers
- ★ Branch Locations

[www.mrcglobal.com](http://www.mrcglobal.com)

### Disclaimer

Products, brands and services outlined in this brochure vary by geographic region and may not be available in all areas.  
Please contact your local authorized representative for further details.